

## 一体化解决方案介绍 Integrated Solution Introduction

一体化（钢结构房舍建设+养殖设备设计制造+环境控制设计+安装售后）较传统鸡舍大大缩短了建设周期，且各专业之间的配合更协调紧密，密封性和保温性更佳；

鸡舍由喂料系统、喂水系统、环控系统、照明系统组成，在满足鸡只的日常生活环境下，提高养殖的经济效益。

Integration (steel structure building construction + breeding equipment design and manufacturing + environmental control design + installation and after-sales) greatly shortens the construction period compared with traditional chicken houses, and the coordination between the various professions is more closely. It has better heat preservation and insulation. The chicken house is composed of feeding system, water drinking system, environmental control system and lighting system, which can improve the economic benefits of breeding.

### ◎集约化现代养殖 Intensive Modern Farming



鸡舍内部 Interior House

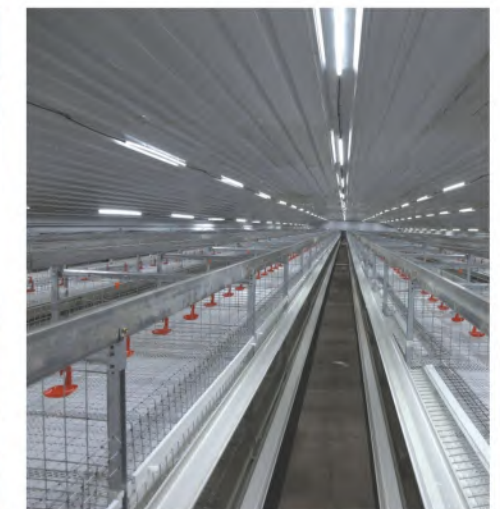


养殖设备组装  
Farming Equipment Assembly



鸡舍外观 House Appearance

## 鑫光正养殖实验农场 Xinguangzheng Animal Husbandry Laboratory



## 钢结构畜牧房舍介绍 Steel Structure Husbandry House Introduction



C型钢结构鸡舍 C Type Rigid Structure Chicken House



桁架结构鸡舍 Truss Structure Chicken House



菲律宾平养肉鸡舍 Philippine Ground Raising Broiler House

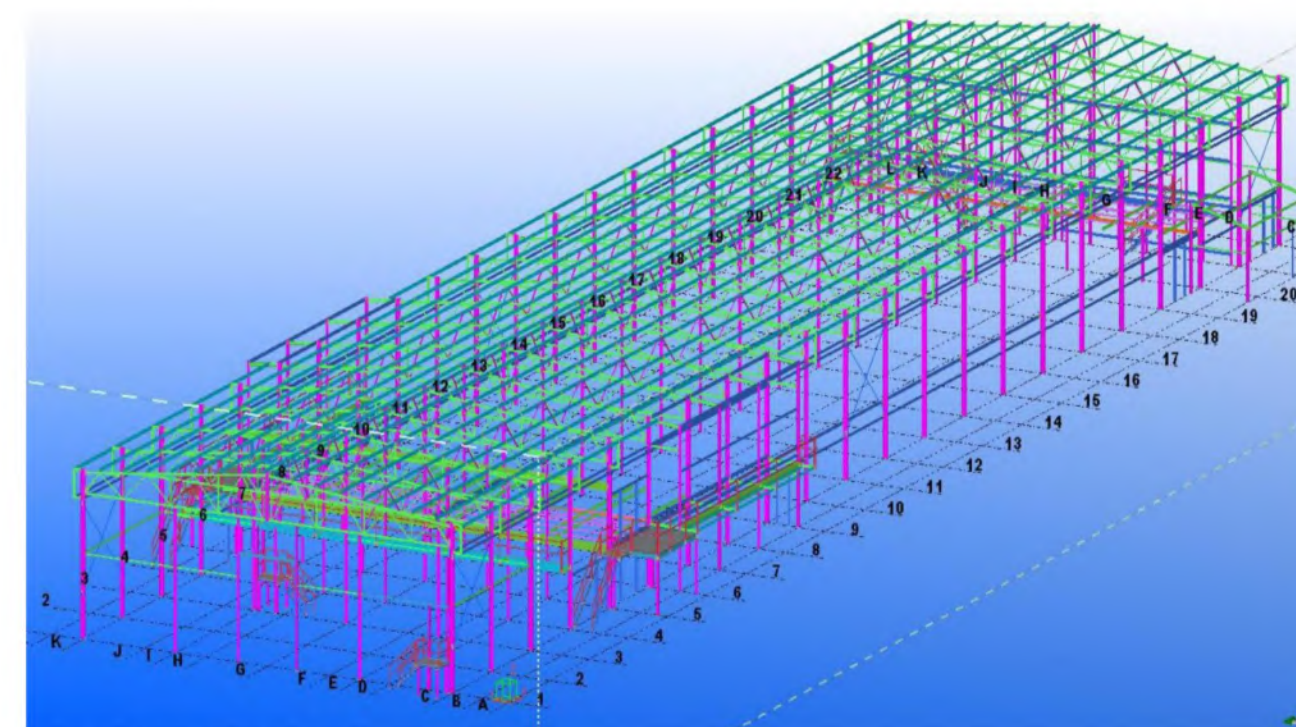
青岛鑫光正牧业有限公司能够提供完整的畜牧养殖房舍，包含平养及笼养鸡舍、猪舍、鸭舍、兔舍、鸽舍等养殖房舍。同时已针对不同的国家和地区制定了适合当地养殖的畜牧房舍（比如厄瓜多尔、菲律宾、卡塔尔等）通过对钢结构及维护材料的选择不同，我公司可提供高性价比和高质量的产品，以满足不同的客户需求。

Qingdao Xinguangzheng Animal Husbandry Co., Ltd. can provide complete livestock breeding houses, including flat breeding and caged chicken houses, pig houses, duck houses, rabbit houses, and pigeon houses. At the same time, we have developed animal husbandry houses suitable for local farming in different countries and regions (such as Ecuador, Philippines, Qatar, etc.). Our company can provide cost-effective and high-quality products through different choices of rigid structures and maintenance materials to meet different customer needs.

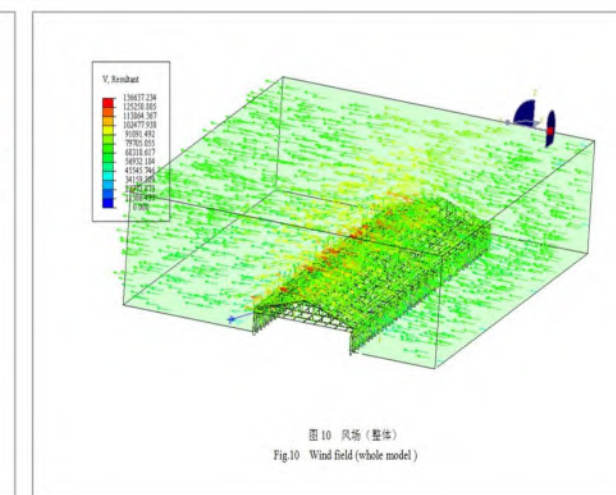
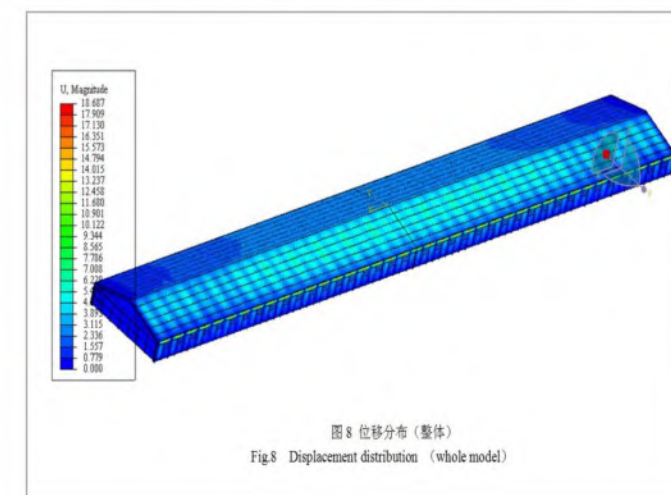
## 畜牧房舍设计原理分析 Husbandry House Design Principles

通过结构设计软件（PKPM,3D3S.Madis）对房舍模型进行分析，可选取最合理的结构形式，同时房舍内外通过维护结构布置，有效控制舍内的密封性和保温性，同环控设备共同配合，达到养殖环控需求。

Through the structural design software (PKPM, 3D3S.Madis), the building model can be analyzed, and the most reasonable structural form can be selected. At the same time, the maintenance structure is arranged inside and outside the house to effectively control the sealing and insulation in the house. Cooperated with the environmental control equipment to meet the needs of breeding environmental control.



鸡舍TEKLA模型 Chicken House TEKLA Model



牧原项目  
Muyuan Project



牧原股份山东莘县10万头保育&育肥场，  
青岛鑫光正集团承接整场一体化建设。

Qing Dao Xinguangzheng Group completed the  
100,000 full line of husbandry products of Muyuan  
Co., Ltd. In the Xin County of Shandong Province,  
Xinguangzheng Group undertook the construction  
of the entire integrated farm.

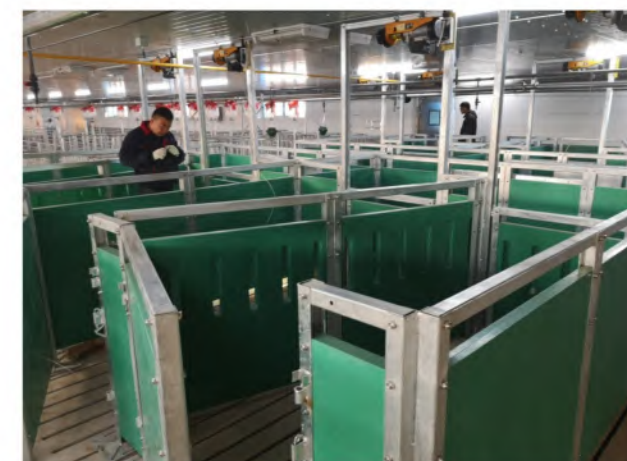


**新希望六和项目**  
 New Hope Liuhe Project

青岛鑫光正集团承建山东阿新希望现代农业产业园项目，项目一期占地面积2016亩，基础设施投资6亿元，主要建设存栏2.1万头种猪猪场和动力站等配套设计辅助工程，以及配套种植区，猪舍及饲养设施的设计及管理模式全部采用国际先进技术，生产流程实现高度自动化、集约化和规模化。

Qingdao Xinguangzheng Group undertakes the construction of Shandong Dong'e New Hope Modern Agricultural Industrial Park Project.

The first phase of the project covers an area of 1344000m<sup>2</sup>(332 acre)and the infrastructure investment is 600 million yuan. The main construction projects include 21,000 pigs and power stations. And the supporting planting area, pig house and breeding facilities design and management mode all adopt international advanced technology, achieving high automation, intensification and scale of production process.



西藏笼养蛋鸡舍项目  
Tibet Cage Layer House Project



杭州笼养蛋鸡舍项目  
Hangzhou Caged Layer House Project



加纳蛋鸡舍项目  
Ghana Egg House Project



厄瓜多尔肉鸡舍项目  
Ecuador Broiler House Project



卡塔尔农场项目  
Qatar Farm Project



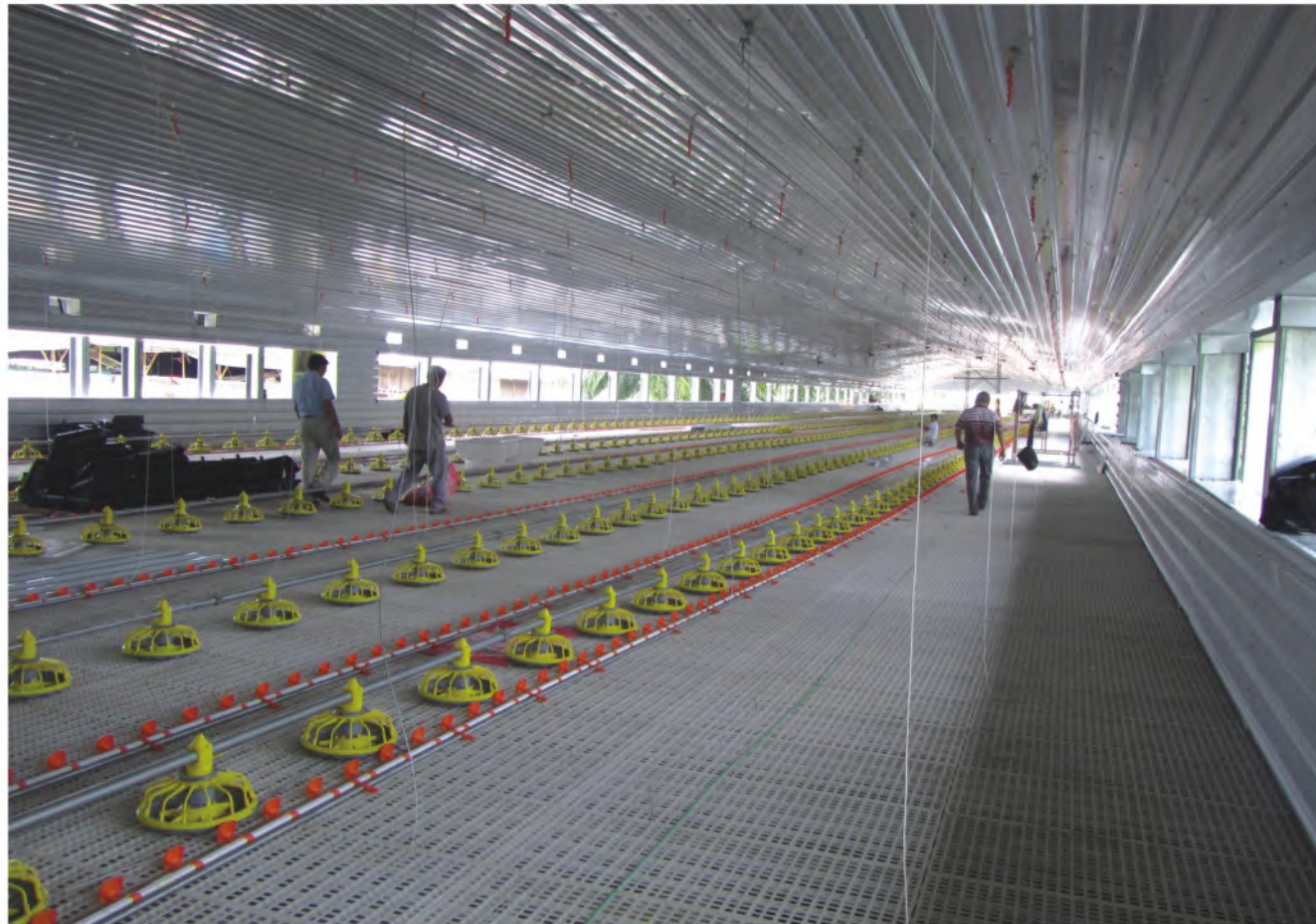
鸡舍20栋  
鹌鹑舍14栋  
兔子舍4栋  
鸭子舍12栋  
屠宰车间1个  
仓库1栋

20 chicken houses,  
14 quail houses,  
4 rabbit houses,  
12 duck houses,  
1 slaughterhouse,  
1 warehouse

多米尼加平养肉鸡舍项目  
Dominica Ground Raising Broiler House Project



菲律宾平养肉鸡舍项目  
Philippine Ground Raising Broiler House Project



菲律宾平养肉鸡舍项目  
Philippine Ground Raising Broiler House Project





### H型蛋鸡笼养设备 5300/4240

H type layer Cage 5300/4240



产品名称 Product Name	层数 Tiers	每组养鸡数量 Capacity	笼组尺寸 Size(mm)	鸡位面积 Area/Chicken
H型5300蛋鸡笼养设备	3/5/6/8 Tiers	180/300/360/544	2285*600*430	450cm <sup>2</sup> /494cm <sup>2</sup>



产品名称 Product Name	层数 Tiers	每组养鸡数量 Capacity	笼组尺寸 Size(mm)	鸡位面积 Area/Chicken
H型4240蛋鸡笼养设备	4 Tiers	240	2250*650*430	450cm <sup>2</sup>

### A型蛋鸡笼养设备4160/4128/自动化蛋鸡育雏设备

A Type Layer Cage Equipment 4160/4128 Automated Brooding Equipment



产品名称 Product Name	层数 Tiers	每组养鸡数量 Capacity	笼组尺寸 Size(mm)	鸡位面积 Area/Chicken
A型4128蛋鸡笼养设备	3/4 Tiers	96/150/160/128 chickens per set	1870*370*370-315 1840*500*400	432cm <sup>2</sup> /450cm <sup>2</sup>



产品名称 Product Name	层数 Tiers	每组养鸡数量 Capacity	笼组尺寸 Size(mm)	鸡位面积 Area/Chicken
自动化育雏设备	4 Tiers	240	1200*650*425	390cm <sup>2</sup>

肉鸡笼养设备  
Broiler Cage Equipment



- 1.多种规格笼具满足不同跨度鸡舍建造需求。
- 2.框架式结构满足设备的整体稳定性，网片受力转换成钣金受力，杜绝网片变形。
- 3.设备主体框架采用275g热镀锌板一次成型，在满足设备强度的前提下保证设备防锈能力。
- 4.笼门为全开启结构，抓鸡时降低鸡只断翅损伤率，便于操作使用。
- 5.双层刮粪结构保证粪带与粪便充分分离。
- 6.网片焊接完成后热镀锌，耐腐蚀，抗老化，使用寿命长达10-15年。

1. A variety of cages to meet the needs of different spans of housing construction
2. The frame structure satisfies the overall stability of the equipment, the mesh wear-stress is changed into a sheet metal wear-stress, which can prevent deformation of the mesh.
3. The main frame of the equipment is formed by one-time forming of 275g hot-dip galvanized sheet, which guarantees the anti-rust ability of the equipment under the premise of meeting the strength of the equipment.
4. The cage door is a fully open structure. When the chicken is caught, the chicken wing breaking rate is reduced, which is convenient for operation.
5. Double-layer scraping structure ensures sufficient separation of manure and feces.
6. After the welding of the mesh is completed, it will be hot-dip galvanized, so it is corrosion-resistant and anti-aging, which has a service life of 10-15 years.



肉鸡笼养设备  
Broiler Cage Equipment

价格最低  
热镀锌框架笼



鸡笼型号	笼子长度 (mm)	笼子宽度 (mm)	层数	层间距 (mm)
HLR 3075	1250	1000	3-4	575

价格最低  
热镀锌框架笼



鸡笼型号	笼子长度 (mm)	笼子宽度 (mm)	层数	层间距 (mm)
HLR 3120	1250	800	3-4	575

肉鸭笼养设备  
Meat Duck Cage Equipment

◎肉鸭笼养设备分类 Meat Duck Cage Equipment Classification



层叠式肉鸭自动化养殖设备，采用1000\*1000 (mm) 笼型，每笼可养殖16只鸭，设备易于操作，自动化清粪系统的使用，节约了大量人力，从而提高了经济效益。

Cascaded Meat Duck Automatic Breeding Equipment, used 1000\*1000 (mm) cage type, which can breed 16 ducks per cage. The equipment is easy to operate. The Automatic Manure Cleaning System it taken saving a lot of manpower, thus improving economic benefits.

鸭笼型号	每组长度 (mm)	每组跨度 (mm)	单元数	层距 (mm)
HLY-1000	1000	1000	3	680



层叠式肉鸭自动化养殖设备，采用2000\*2000 (mm) 笼型，每笼养殖数量60只，网上可用面积比常规笼型提高，单位养殖密度降低，密度小养殖效果更好。笼间距加高到800mm，有利于笼内通风。

The Cascaded Meat Duck Automatic Breeding Equipment adopts 2000\*2000 (mm) cage type, which the breeding capacity per cage is 60 units. The available area on the net is higher than the conventional cage, the unit culture density is reduced. So the density is small but with better performance. Cage spacing is increased to 800mm, which is conducive to inner ventilation.

鸭笼型号	每组长度 (mm)	每组跨度 (mm)	单元数	层距 (mm)
HLY-2000	2000	2000	3	800

肉鸭笼养设备  
Meat Duck Cage Equipment

◎鑫光正自主研发鸭子笼 超前的设计理念  
Xinguangzheng Independent R&D Duck Cage Advanced Design Concept

- ◆鸭笼：弹簧门，操作简单，出鸭快捷
- ◆Duck Cage: Spring Door, easy to operate, fast transport



- ◆自动清粪系统：
- ◆Automatic Manure Cleaning System:



- ◆饮水系统：
- ◆Water Drinking System:



↑ 机头侧采用防跑偏螺旋滚筒，不伤清粪带，确保粪带使用年限。

↑ Automatic Manure Cleaning System: the anti-running spiral roller on the nose side, does not hurt the belt, so as to ensure the life of the fecal belt.

← 升降式水线系统，乳头对称布置，方便鸭子在两侧啄乳头饮水，大水量饮水器满足肉鸭在不同阶段的饮水需求，根据鸭喙偏平的特点采用宽大吊杯，有效减少饮水滴落在网垫和底网上，清洁卫生。

← Water Drinking System: lifting water line system, nipples are arranged symmetrically, it is convenient for ducks to drink water on both sides of the nipple. Large-volume water drinker meets the demand of meat ducks at different stages. According to the flat characteristics of duck plaque, we take wide and big hanging cup to effectively reduce the drop of drinking water on the mesh mat and the bottom net, which is clean and hygienic.

- ◆喂料系统：
- ◆Feeding System:

喂料系统横跨在鸭笼主体上行走喂料，达到可自动调节料盘高度和料量的效果，上料机由机架、行走动力输出系统、行走系统、下料动力系统、料量调节系统、配电系统组成。

Feeding System: The Feeding System runs across the main body of the duck cage to achieve the effect of automatically adjusting the height of the feed pan and the amount of the feed. The loading machine is composed of the frame, the traveling power output system, the walking system, the power supply system, the material amount adjustment system and the power distribution system.

肉鸡平养部分设备  
Broiler Ground Raising Equipment



◆合理的设备配置 Reasonable Equipment Configuration

- 1.配合鸡舍专业钢结构给客户一体化交钥匙工程。
- 2.专业的技术人员根据不同国家地区的气候条件提供最合理的设计方案。

1. Provide professional integrated turnkey project with professional steel structure of the chicken house
2. Professional technicians provide the most reasonable design according to the climatic conditions of different countries and regions.

兔子舍介绍  
Introduction to the Rabbit House

◆卡塔尔农场 Qatar Farm



**现代化笼养鸽子舍介绍**  
 Modern Caged Pigeon House Introduction



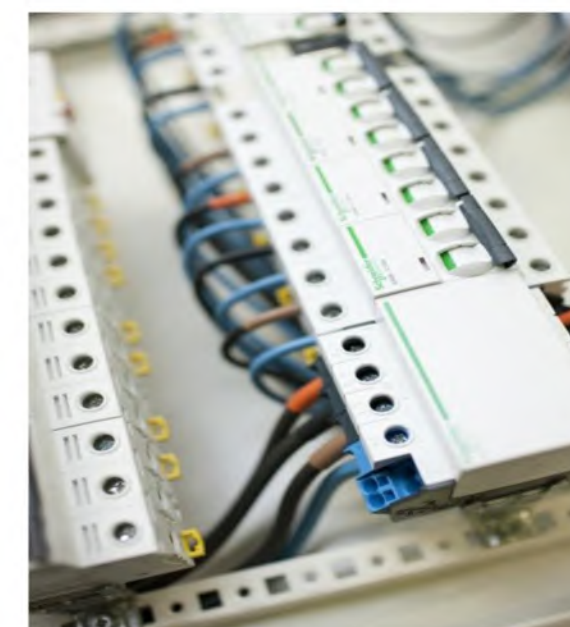
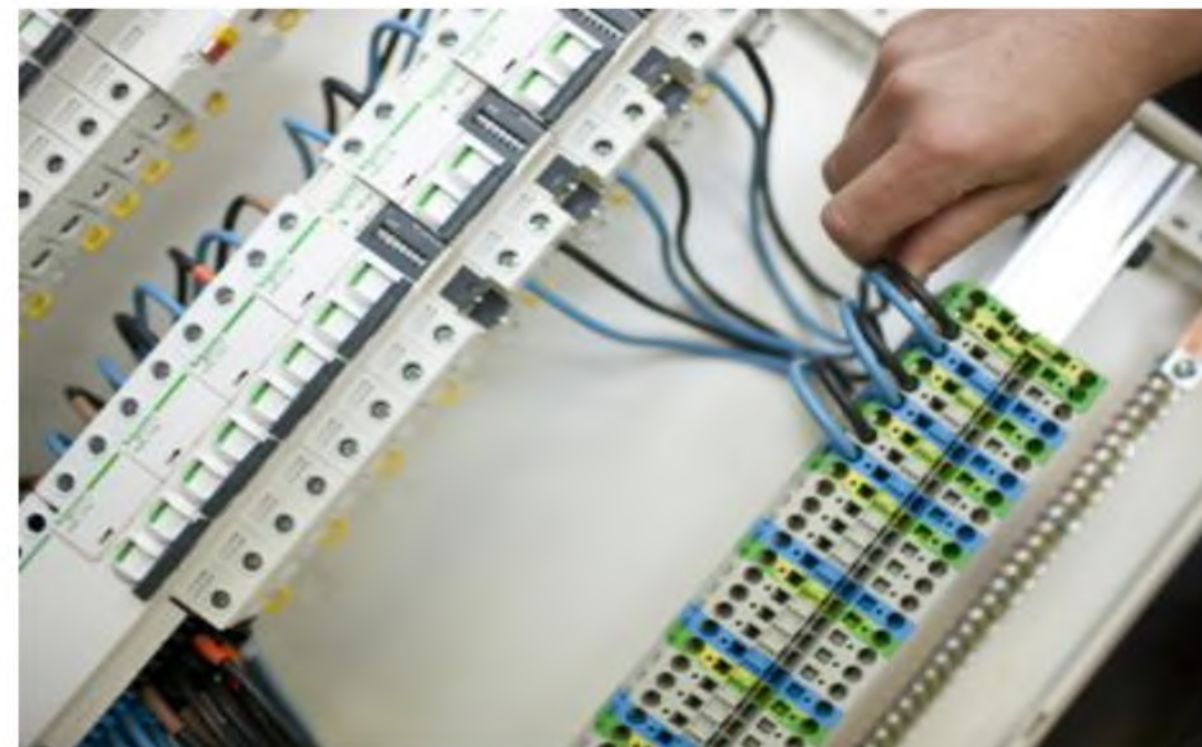
热镀锌丝焊接，行车式喂料，速度可调节，饮水采用乳头式饮水，确保鸽子饮水清洁，自动清粪系统使鸽舍内更加整洁卫生，防止鸽子疾病传染。

Hot-dip galvanized wire welding, driving feeding with adjustable speed, drinking system of nipple-type to ensuring clean water source for pigeons. Automatic cleaning system to make the house clean and hygienic to prevent infection.

**电气介绍**  
 Electrical Introduction

提供定制化电控系统，模块化设计，安装维修省时省心。

Provide customized electronic control system and modular design. Easy to Installation and maintenance.



## 鑫光正物联网平台介绍 Xinguangzheng IoT Platform Introduction

### 鑫光正物联网引领智能养殖 Xinguangzheng IoT leads intelligent farm IoT platform

物联网平台

1. 分布式控制
  2. 兼容多种通讯方式 (RS-485、PPI、PROFI NET等)
  3. 多种网络接入 (4G、wifi/光纤、有线)
  4. 大容量数据传输 (图片、视频)
  5. 远程软件升级
1. Distributed Control
  2. Compatible with multiple communication methods (RS-485, PPI, PROFI NET, etc.)
  3. Multiple network access (4G, Wifi/fiber, wired)
  4. Large-capacity data transmission (picture, video)
  5. Remote software upgrade



## 鑫光正自主研发环控器介绍 Xinguang Independently Developing Controllers Introduction

### 最简单易用的环境控制器 The easiest environmental controller



**E3feedr 环境控制器，是鑫光正公司自主研发的新一代环境控制产品，其功能强大，运行稳定，是自动化养殖的首选产品。**

E3feedr environmental controller is a new generation of environmental control products independently developed by Xinguangzheng. Its powerful function and stable operation are the first choice for automatic farming.

1. 采用10.1寸触摸屏，参数设置简单易学
2. 图形化操作界面，实时显示运行状态
3. CAN 总线通讯，布线简单。通讯稳定，数据影响速度快
4. 先进的端口配置技术，每个端口可自由配置接入设备
5. 支持定速、变速风机，最大可扩展40组风机，通风模式丰富、灵活，可精准控制通风
6. 配备PID 制冷控制及湿度保护
7. 支持集中式及分布式安装
8. 支持物联网连接可远程监控

1. Adopt 10.1 inch touch screen, easy to learn parameter setting.
2. Graphical operation interface, real-time display of operating status.
3. CAN bus communication, simple wiring, stable communication and fast data impact.
4. Advanced port configuration technology, each port can be freely configured with access devices.
5. Supports fixed speed and variable speed fans. It can expand up to 40 sets of fans. The ventilation mode is rich and flexible, and can accurately control ventilation.
6. Equipped with PID cooling control and humidity protection.
7. Support centralized and distributed installation .
8. Support IoT networking connection, remote monitoring.

## 环控器介绍

Introduction to the Ring Controller

### ◆Agrologic 全系列产品 All-series product



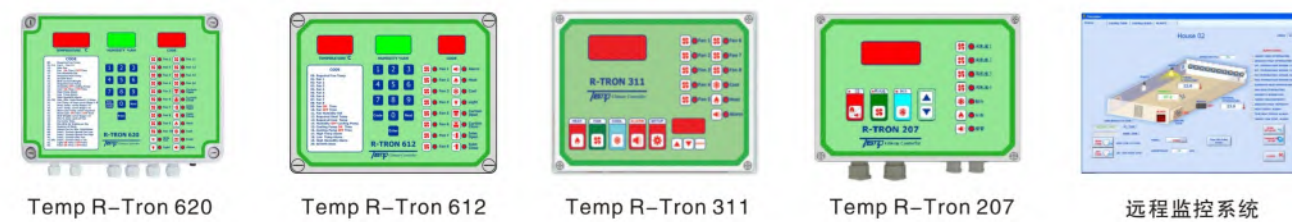
### ◆Agrologic 控制器产品 Controller



### ◆Agrologic 传感器 Sensor



### ◆泰牧 (TEMP) 环境控制器 Condition controller



## 温控系统介绍

Temperature Control System Introduction

### 畜牧专用加热设备介绍

Special heating equipment introduction for animal husbandry



### ◆太阳能与空气能联合运行原理说明:

太阳能集热器与储热水箱、空气能热泵机组置于楼顶，晴天利用太阳能集热器将水加热，然后储存在保温水箱中，通过热水管道可向多个方向（室内风机盘管、地暖管、淋浴器）同时提供热水，全自动运行，不需要人工操作，在阴雨天利用自动辅助空气能热泵机组加热，保证热水源源不断地供应。

### ◆The principle of joint operation of solar energy and air energy:

The solar collector, the hot water storage tank and the air energy heat pump unit are placed on the roof of the building. On sunny days, the water is heated by the solar energy collector, then stored in the heat preservation water tank, and the hot water pipe can be used in multiple directions (indoor fan coil, floor heating pipe and shower) and provide hot water at the same time. Fully automatic operation. No manual operation. Automatic auxiliary air energy heat pump unit will work on rainy days to ensure continuous supply of hot water.

